

A wide-angle photograph of a desert landscape. In the foreground, there are dark, undulating sand dunes. In the middle ground, a flat, arid valley stretches out. In the background, a range of rugged mountains is covered in snow under a clear blue sky.

Focused on critical minerals for the
energy storage and advanced
technology industries.

OTCQB: LTUM
www.lithiumcorporation.com

July 2024

Forward Looking Statements

Corporate Statement

We intend to operate our company in an open, ethical and transparent manner, focusing on sound geologic science, full disclosure of operations, and conservative financial management.

Disclosure

Certain statements contained in this presentation, including all statements that are not historical facts, contain forward-looking statements and forward-looking information within the meaning of applicable securities laws. Such forward-looking statements or information include, but are not limited to, statements or information with the respect to Lithium Corporation (the “Company”) overall objectives and strategic plans, work programs, exploration budgets and targets and minerals resource estimates. Readers should review all of the Company’s public disclosure including its Annual Information Form and the risk factors contained therein filed on with the SEC on April 10th 2017, and available on www.otcmarkets.com.

Forward Looking Statements

Often, but not always, forward-looking statements or information can be identified by the use of words such as “plans”, “expects”, or “does not expect”, “is expected”, “budget”, “scheduled”, “estimates”, “forecasts”, “intends”, “anticipates” or “does not anticipate”, or “believes” or variations of such words and phrases or statements that certain actions, events or results “may”, “could”, “would”, “might” or “will” be taken, occur or be achieved. With respect to forward-looking statements and information contained herein, we have made numerous assumptions including that, among other things, no significant adverse changes will occur to our planned project expenditures, that there will be no significant delays of the completion of our planned exploration programs; as to the continuing availability of capital resources to fund our programs; and that the company will not experience any adverse legislative or regulatory changes. There are numerous uncertainties inherent in estimating mineral reserves and mineral resources, including many factors beyond the Company’s control. Such estimation is a subjective process, and the accuracy of any reserve or resource estimate is a function of the quantity and quality of available data and of the assumptions made and judgment used in engineering and geological interpretation. In addition, there can be no assurance that lithium recoveries in small scale laboratory tests will be duplicated in larger scale tests under on-site conditions or during production. Although we have attempted to identify factors that would cause actual actions, events or results to differ materially from those disclosed in the forward-looking statements or information, there may be other factors that cause actions, events or results not to be as anticipated or intended. Also, many of the factors are beyond the control of the Company. Accordingly, readers should not place undue reliance on forward-looking statements or information. Although management believes that the assumptions made and the expectations represented by such statements or information are reasonable, there can be no assurance that any forward-looking statements or information referenced herein will prove to be accurate. Pure undertakes no obligation to reissue or update any forward-looking statements or information as a result of new information or events after the date hereof except as may be required by law. All forward-looking statements and information herein are qualified by this cautionary statement.

Corporate Overview

Diversification in minerals & jurisdiction protecting value.

Lithium Corporation (OTCQB:LTUM) is a Nevada based mineral exploration company. Since 2009, the Company has been devoted to exploring for energy storage related resources in North America.

Lithium Corporation's portfolio of exploration assets host lithium, graphite, rare earth, titanium and fluorspar mineralization; all critical to the world's shift to a sustainable, low-carbon future.



Nevada, USA

LITHIUM

Fish Lake Valley
North Big Smoky
San Emidio



British Columbia, Canada



FLUORSPAR

Las Pilas



GRAPHITE

BC Sugar



RARE EARTH ELEMENTS

Yeehaw

Corporate Highlights

Capital Structure

Shares Outstanding **117.89M**

Share Price **USD \$0.0348**
As of Feb 2, 2024 52-week H/L: 0.021 / 0.11

Market Cap **USD \$4.103M**
As of Feb 2, 2024

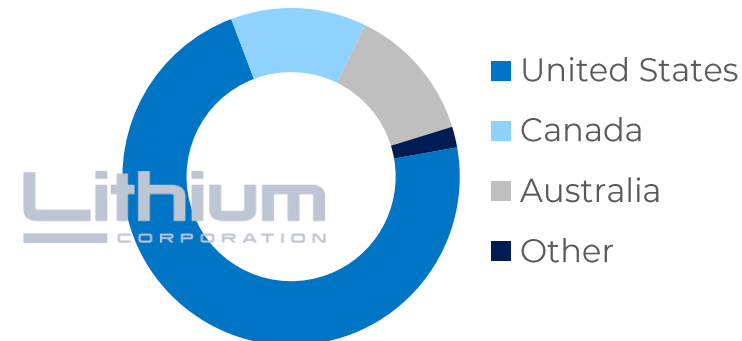
Ownership	Common Stock Held	% of Shares Outstanding
-----------	-------------------	-------------------------

Held by Insiders	14.99 M	12.7%
------------------	----------------	--------------

	Total Shares	Number of Shareholders
--	--------------	------------------------

Shareholders with >400k shares	36.75 M	11
--------------------------------	----------------	-----------

Shareholder Geography



Share Price 5Y July 16, 2024

OTCQB : LTUM





PROJECTS - NEVADA

OTCQB: LTUM

www.lithiumcorporation.com

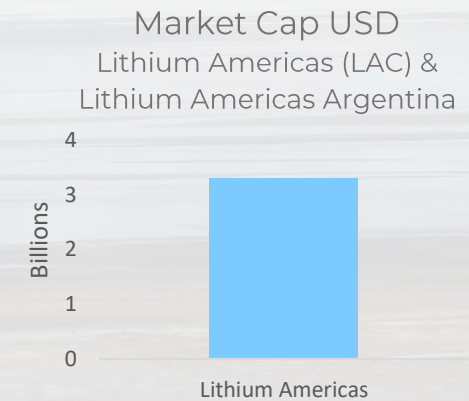
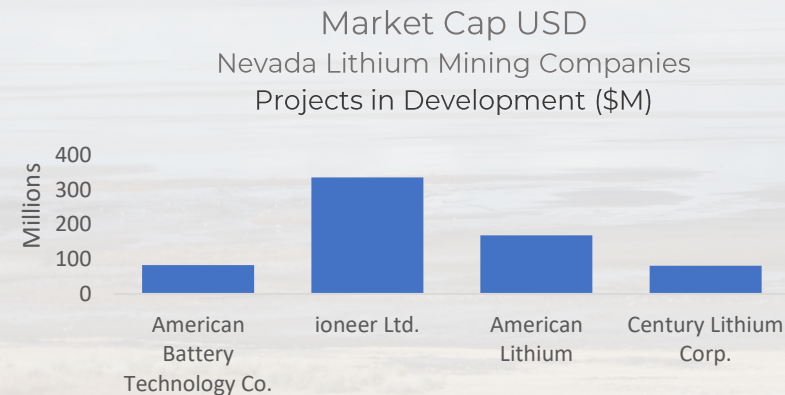
Nevada

Silicon Valley of Lithium

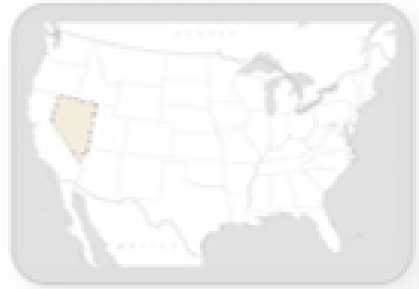
Nevada is “positioned to be ground zero for the energy transition and to play a key role in securing the energy independence and security of the United States.”

[Nevada Governor's Office of Economic Development](#)

Lithium Corporation's Nevada lithium prospects are surrounded by some of the world's most exciting new lithium mining projects.



Nevada



US Lithium Heartland

Nevada is recognized as the number one mining jurisdiction in the world.

Mineral rich North America offers robust mining and processing expertise, mining-friendly governments, fiscal stability with sophisticated financial markets, along with high standards for environmental protection, human rights, labor, and workplace safety. These attributes combine to secure the state of Nevada's recognition as the World's Top Mining Jurisdiction.

[The Fraser Institute](#)



Lithium CORPORATION Nevada Operations

- (A)** Fish Lake Valley
- (B)** North Big Smoky
- (C)** San Emidio

Lithium Related Sites

- (1)** Tesla Gigafactory
- (2)** Lithium Americas Thacker Pass
- (3)** American Lithium TLC
- (4)** Ioneer Rhyolite
- (5)** Albemarle Silver Peak
- (6)** Century Lithium Clayton
- (7)** Nevada Sunrise Metals Gemini

Projects

Fish Lake Valley, Nevada

Project Type	Lithium-in-brine, possible Li claystone lithium/boron/potassium enriched brine in a playa or salt marsh setting.
Location	Northern Esmeralda County, West Central Nevada
Ownership	100% Lithium Corporation
Optionee/ Strategic Partner	Morella Corp. (ASX:IMC) earn-in 60% interest
Size	Approximately 11,360 acres (4,597 hectares)
Nearby	Approximately 25 miles from Albemarle Silver Peak lithium operation. Village of Dyer ~12 mi. Town of Tonopah ~50 mi. east.

Recent News

Geophysical ground survey work by Optionee Morella Corp. generated multiple stand-alone targets. Permits received and drilling to commence in Q2 2023 on (1) shallow targets proximal to historic boron/lithium/potassium mining operation in north and (2) deeper targets in southerly portions.



The geological setting at Fish Lake Valley is highly analogous to the salars of Chile, Bolivia, and Peru, and the nearby Clayton Valley, where Albemarle operates its long running Silver Peak lithium-brine production facility.

Projects

North Big Smoky (Carvers)

Project Type	Lithium-in-brine geological setting similar to other brine prospects and Clayton Valley (Silver Peak lithium operation) to the southwest.
Location	Nye County, Nevada
Ownership	100% Lithium Corporation
Optionee/ Strategic Partner	Morella Corp. (ASX:1MC) Optionee earn-in 60% interest
Size	Approximately 3,400 acres (1,375 hectares)
Nearby	Excellent access to transportation and power infrastructure. Village of Carvers ~15 mi. south, Town of Tonopah ~75 mi. south.

Recent Activity

Strategic partner Morella Corp. (ASX: 1MC) completed a four-hole sonic drill program to test sediments up to 200 meters following May 2023 soil sampling program which identified further zones of elevated lithium grades across the western extension of the prospect. Controlled-source Audio-frequency Magnetotellurics (CSAMT) study October 2022.



The North Big Smoky site is an under-explored playa with good indications of lithium at surface and excellent access to transportation and power infrastructure.

Strategic Partner



Lithium Corporation has maintained a strategic alliance with Morella Corporation (ASX: 1MC) for almost ten years. Morella Corp. is an Australian exploration and resource development company focused on lithium and battery minerals.

Through cash, stock and exploration work over four years, Morella can earn a 60% interest in Lithium Corp.'s Fish Lake Valley and North Big Smoky lithium brine properties in Nevada.

Optionee

Fish Lake Valley North Big Smoky

In addition to Morella's interest in Fish Lake Valley and North Big Smoky, the company has an interest in the Mallina spodumene project in the renowned Pilbara mining district in Western Australia.

Morella Corp. contributes valuable experience and expertise with moving a project from discovery through to production. Morella is Lithium Corporation's largest shareholder. The company is current with obligations under their Optionee agreements.

Projects

San Emidio, Nevada

Project Type	Lithium-in-brine
Location	Washoe County, Northwest Nevada
Highlights	Good infrastructure. Geothermal power produced on-site. Anomalous Li-in-brine to depths over 100 feet. Close to Tesla/Panasonic “Gigafactory”.
Ownership	100% Lithium Corporation
Optionee/ Strategic Partner	Open
Size	Approximately 4,800 acres (1,940 hectares)
Access	Roughly 65 miles north-northeast of Reno, and 15 miles south of Gerlach, Nevada. On paved/gravel road just off state Hwy 447.



Sediment sampling at the San Emidio property by Lithium Corp. delineated a moderately strong lithium anomaly. Brine sampling detected anomalous lithium values. The lithium-in-brine anomaly is roughly 1 1/2 miles long & 1/2 mile wide. It is presently open-ended.



PROJECTS - CANADA

OTCQB: LTUM

www.lithiumcorporation.com

Projects

CANADA



BC Sugar

Yeehaw

Project Type	Flake Graphite
Location	Okanagan Highlands east of Vernon, British Columbia
Highlights	Disseminated large flake graphite (battery grade material) in a weathered matrix.
Ownership	100% Lithium Corporation
Optionee/ Strategic Partner	Open
Size	Approximately 2,947 acres (1,192 hectares)
Nearby	Similar geologic setting as the Black Crystal operation to the east in Little Slokan Valley.

Project Type	Titanium (Ti) / Rare Earth Elements (REE's) in a lamprophyric dyke host
Location	Monashee Mountains, South Central British Columbia
Highlights	Several exposures of Ti/REE enriched lampropyres occur on the property
Ownership	100% Lithium Corporation
Optionee/ Strategic Partner	Open
Size	Approximately 5,438 acres (2,200 hectares)

Projects

CANADA

Lithium
CORPORATION

Las Pilas



Project Type	Fluorspar
Location	Greenwood Mining Division, south central British Columbia
Highlights	Fluorite epithermal vein mineralization.
Ownership	100% Lithium Corporation
Optionee/ Strategic Partner	Open
Size	Approximately 11,068 acres (4,478 hectares)
Nearby	Adjacent to and partially overlapping past producing Rock Candy fluorspar mine

Fluorine and its source material fluorspar are classified as 'critical minerals' by Governments in the United States, Canada, EU, and Australia. There are no known substitutes for fluorspar derivatives in cornerstone clean energy technologies. It is found in all three main parts of an electric battery: cathode, electrolyte and anode, is essential to processing silicon vital for solar panels, and fluoropolymer membrane technology is at the heart of the hydrogen economy.

Management & Directors

Extensive Experience & Expertise
from Exploration to Mine Development



President & CEO
Tom Lewis

Tom has more than 40 years experience working in the Mineral Exploration and Oil & Gas industries throughout the world.



VP, Business Development
Brian Goss

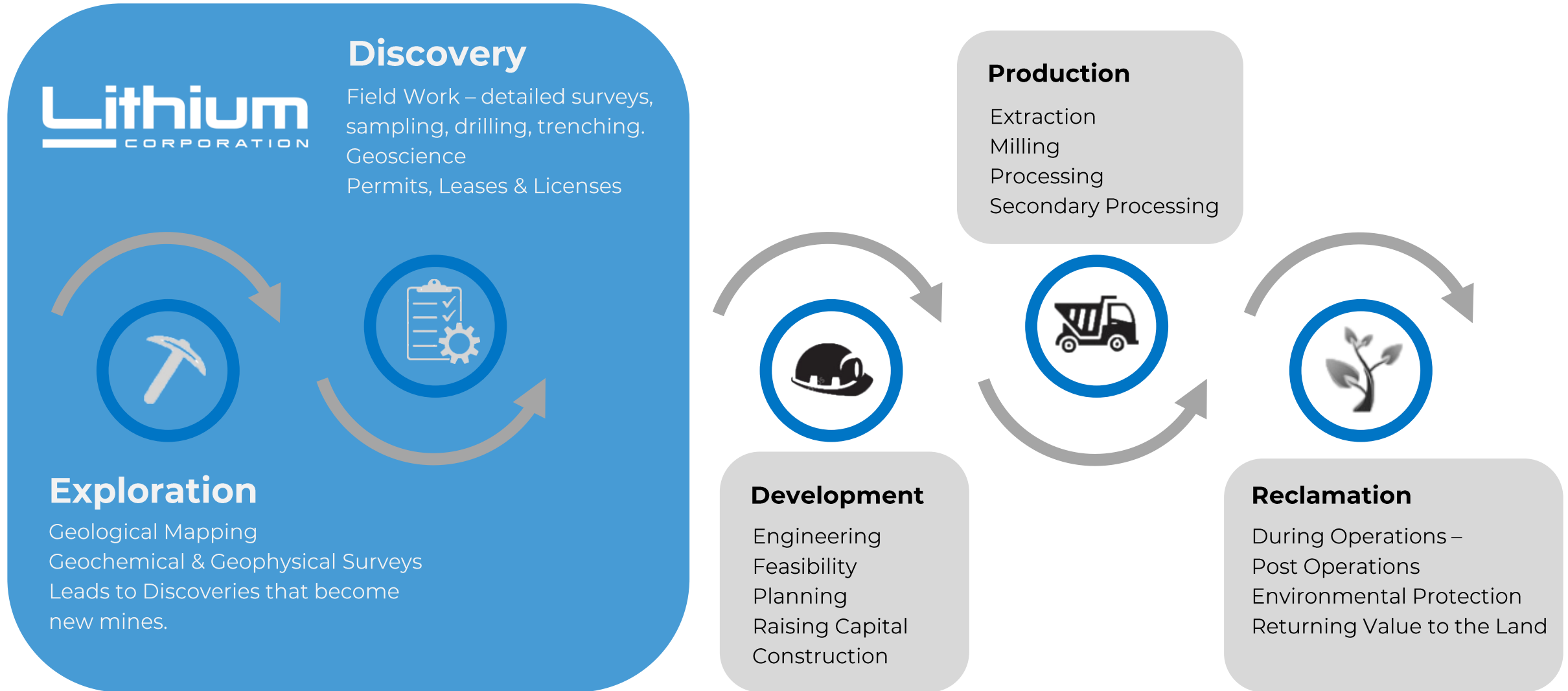
Brian has over 20 years experience as a mining industry Entrepreneur, Executive, Director, and Geologist specifically in precious, base, and energy metals exploration.



Director
James Brown

James is a professional mining engineer with extensive operational and development experience in the mining and exploration industries in Australia, North America, and Indonesia.

Lithium Corporation in the Lifecycle of a Mine



Lithium Corporation

Project Generator

Lithium Corporation is one of a small number of 'Project Generators' focused on critical minerals in North America.

As a project generator, Lithium Corporation leverages its internal exploration expertise to identify and acquire promising mineral properties and perform early-stage exploration activities.

The Company generates value by successfully attracting strategic partners or 'Optionees' to each exploration prospect. Optionees finance and perform further exploration work for the opportunity to earn a share of future profits if/when the project moves to production.

Lithium Corporation is a
Junior Mining Company
in the role of a
Project Generator.

OTCQB: LTUM

Lithium Corporation
1031 Railroad Street, Suite 102B
Elko, Nevada 89801

www.lithiumcorporation.com



Lithium
CORPORATION